



FINISHING BLADES

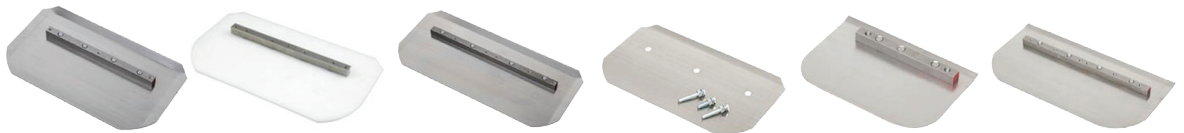
Finishing blades are designed to produce a smooth and polished finish to the concrete surface. After the slab has firmed up, blade pitch is increased to a greater angle resulting in a smooth and polished finish.



MODEL		BR-20455	BR-20414	BR-20410	BR-WH8X18-5	FT-D34-3	FT-D40-2
Size	mm	120 x 230	152 x 355	152 x 460	210 x 460	150 x 325	150 x 375
Size	in	4.75" x 9"	6" x 14"	6" x 18"	8" x 18"	6" x 12.75"	6" x 14.75"
Weight	kg	2.20	4.80	6.20	12.75	5.20	6.00
Pack Size		4 Blades	4 Blades	4 Blades	5 Blades	4 Blades	4 Blades
To Suit		FP424	FP436 / FP836 FP440	FP446 / FP846	FP446 / FP846	FT34	FT40

COMBINATION BLADES

Combination blades are designed for operators who wish to use one blade for both floating and finishing applications. During the initial stages of power trowelling the blade is set flat and is used for floating, as the slab firms up the blade pitch is increased to produce a smooth finish.



MODEL		BR-20479	BR-20479P	BR-20480	FT-10-66	FT-S34-18	FT-S40-18
Size	mm	205 x 355	200 x 360	205 x 455	185 x 322	185 x 322	195 x 370
Size	in	8" x 14"	8" x 14"	8" x 18"	7.25" x 12.50"	7.25" x 12.50"	7.75" x 14.50"
Weight	kg	6.00	4.90	8.00	4.50	7.20	8.50
Pack Size		4 Blades	4 Blades	4 Blades	4 Blades	4 Blades	4 Blades
To Suit		FP436 / FP836 FP440	FP436 FP440	FP446 / FP846	FT34	FT34	FT40

PAN FLOATS

Pan floats clip onto both finishing or combination blades.

Pan floats with their large surface area achieve flatter floors than traditional float blades as they are more efficient in removing imperfections, bumps and voids.



MODEL		BR-11766	BR-11691	BR-900P	BR-440PAN	BR-11414	BR-11692	BR-WH3505	BR-WH3505FLAT
Size	mm	605	940	920	1050	1175	1230	1175	1175
Size	in	24"	37"	36.25"	41.25"	46.25"	48.5"	46.25"	46.25"
Weight	kg	5.00	17.60	16.00	23.30	26.30	29.40	30.00	20.00
Type		4 - Blade	4 - Blade	4 - Blade	4 - Blade	4 - Blade	4 - Blade	5 - Blade	5 - Blade
Connection Type		Clip	Clip	Clip	Clip	Clip	Clip	Safety Pin	Safety Pin
To Suit		FP424	FP436 / FP836	MP225 - Edger	FP440	TS96 / LP95	FP846	Whiteman / Allen	Whiteman / Allen